

## Electric Lift Installation Template

# SYDNEY

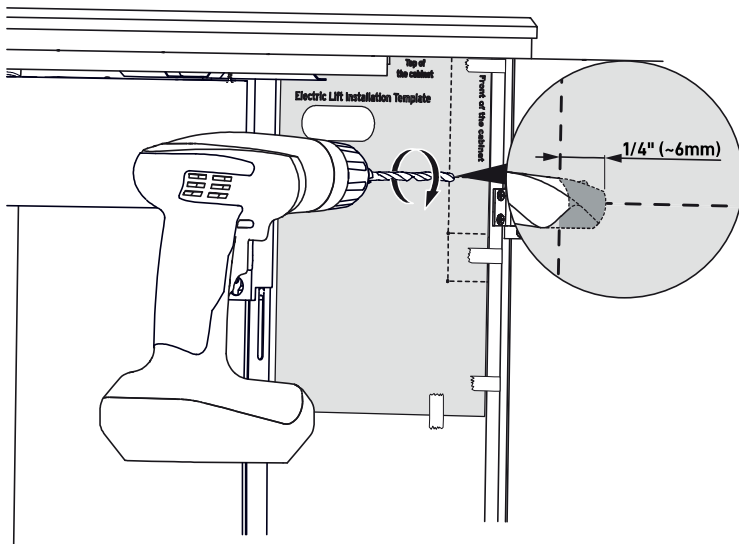
Make sure your printer output is set to Actual Size or 100%.  
Doublecheck your printed template against your controller.  
If all 3 of the holes do not line up with the 3 drilling markers,  
call Customer Service for assistance at 1-800-533-7347, ext. 1

Position the template inside the cabinet as shown.

The top edge of the template paper should touch the top panel  
of the cabinet, and the front edge of the template paper  
should be even with the front edge of the right-hand side panel.

Tape the template in place to prevent it from shifting as you drill.

**You will need a 1/16" Drill Bit.**



Top of  
the cabinet

Front of the cabinet

**Drill pilot holes NO DEEPER THAN 1/4" into the panel.**

**DO NOT DRILL ALL THE WAY THROUGH THE PANEL!**

Once your pilot holes are drilled, remove the template paper and use the provided screws (3) to mount the Vertical Programmable Controller.